

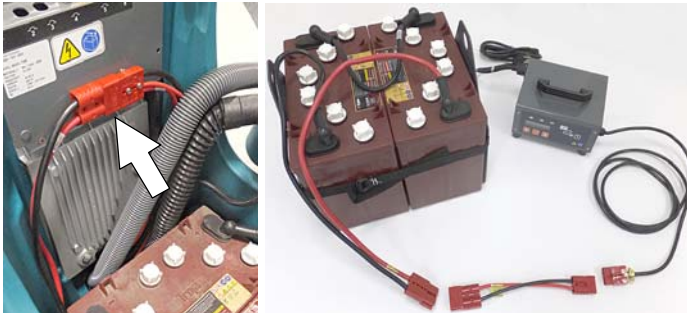


Battery Cable Kit



Models: T300, T300e, Speed Scrub 300, A300

This battery cable kit is intended for the battery lift-out box option. It allows user to recharge an additional set of batteries with an off-board battery charger as shown below.



INSTALLATION INSTRUCTIONS:

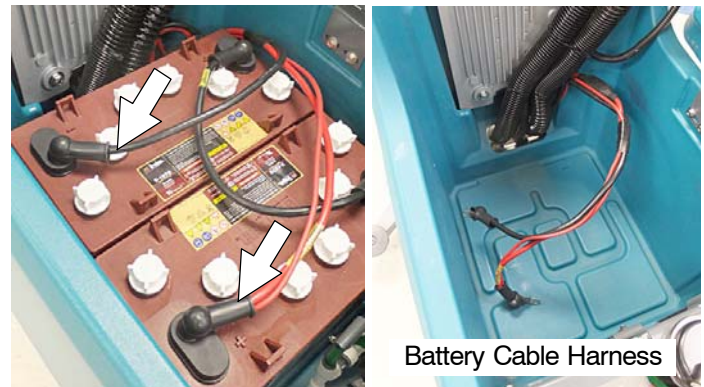
Installation Time: 1 Hour

Tools Required: 10mm and 13mm wrench.

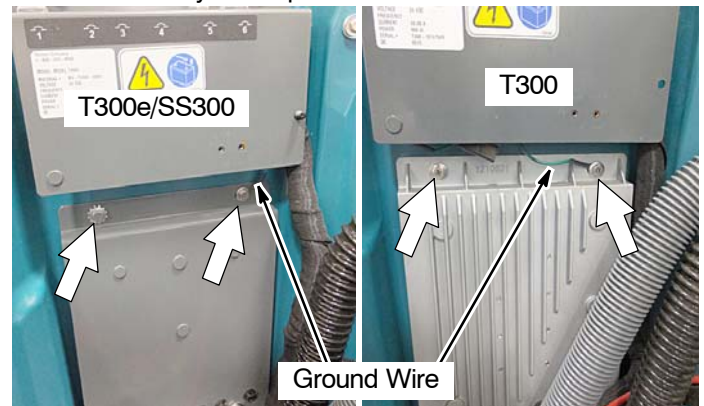
FOR SAFETY: Before servicing machine, stop on level surface, turn key off and set parking brake if equipped.

FOR SAFETY: When handling batteries, wear appropriate personal protection equipment as needed. Avoid contact with battery acid.

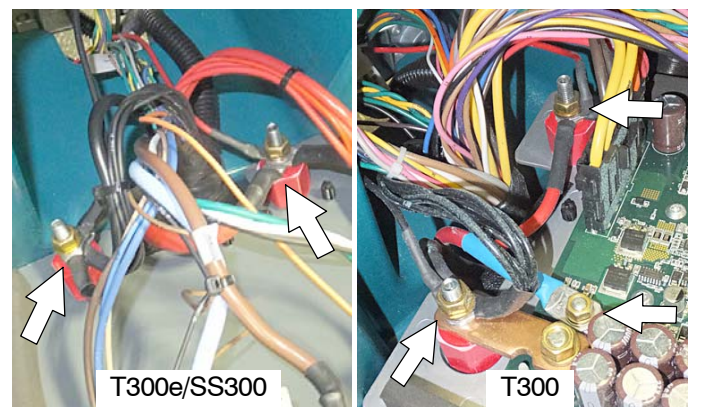
1. Disconnect battery cables and carefully remove batteries from machine.



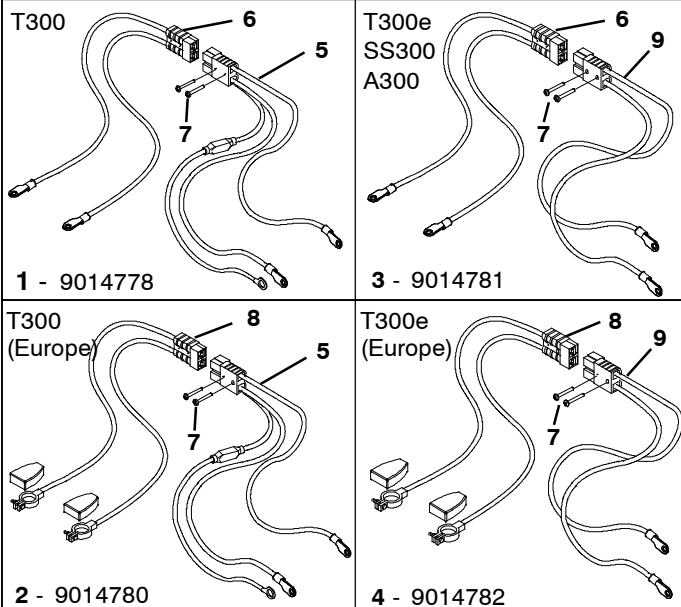
2. Remove the top two screws from the electrical panel and carefully lower panel.



3. Disconnect battery cable harness from electrical panel and discard cable harness. Save terminal boots.



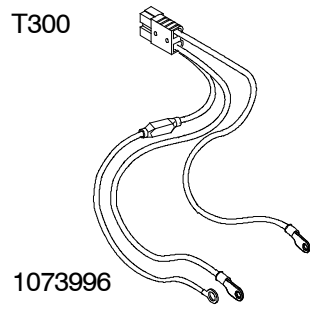
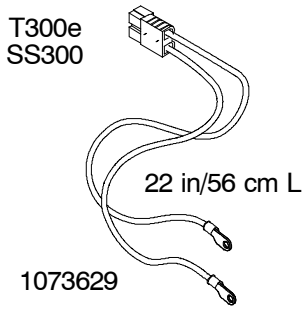
Kit Contents



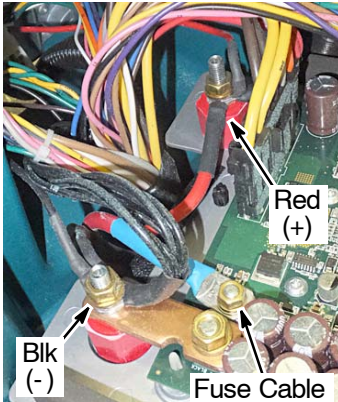
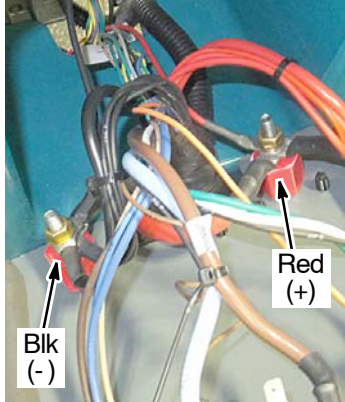
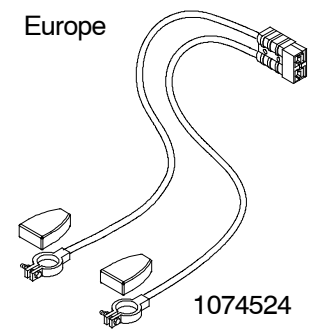
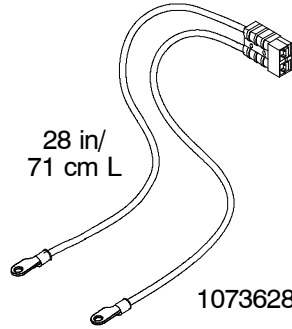
Ref	Part No.	Description	Qty.
1	9014778	Cable Kit, Battery, Ring terminals [T300]	
2	9014780	Cable Kit, Battery, Clamp terminals [T300] EU	
3	9014781	Cable Kit, Battery, Ring terminals [T300e/SS300]	
4	9014782	Cable Kit, Battery, Clamp terminals [T300e] EU	
5	1073996	Cable, Battery, w/ Fuse	1
6	1073628	Cable, Battery, w/ Ring Terminals, 28 in/71 cm L	1
7	33931	Screw, Pan, Phl, m4 x 0.70 x 30,ss	2
8	1074524	Cable, Battery, w/ Clamp Terminals	1
9	1073629	Cable, Battery, 22 in/56 cm L	1

NOTE: For each additional battery pack lift-out box, order battery cable (item 6) 1073628 Cable, Battery, w/ Ring terminals, or (item 8) 1074524 Cable, Battery, w/ Clamp terminals.

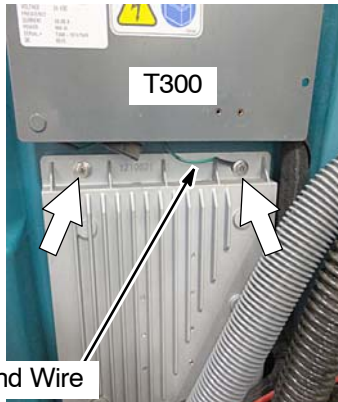
4. Install kit battery cable harness to electrical panel components as shown.



7. Re-install batteries and connect kit battery cable harness to batteries as shown.



5. Refasten electrical panel to machine. Make sure to reconnect ground wire.



8. Connect battery cable connectors together.



6. Connect battery cable connector to panel using two screws supplied with kit as shown.

